



Switched Power Distribution Unit VT604t

VT604t / Switched Power Distribution Unit

Monitor 100 sensors, 700 elements,
Reserve power supply

Perfect for device switching
& monitoring in IT racks.



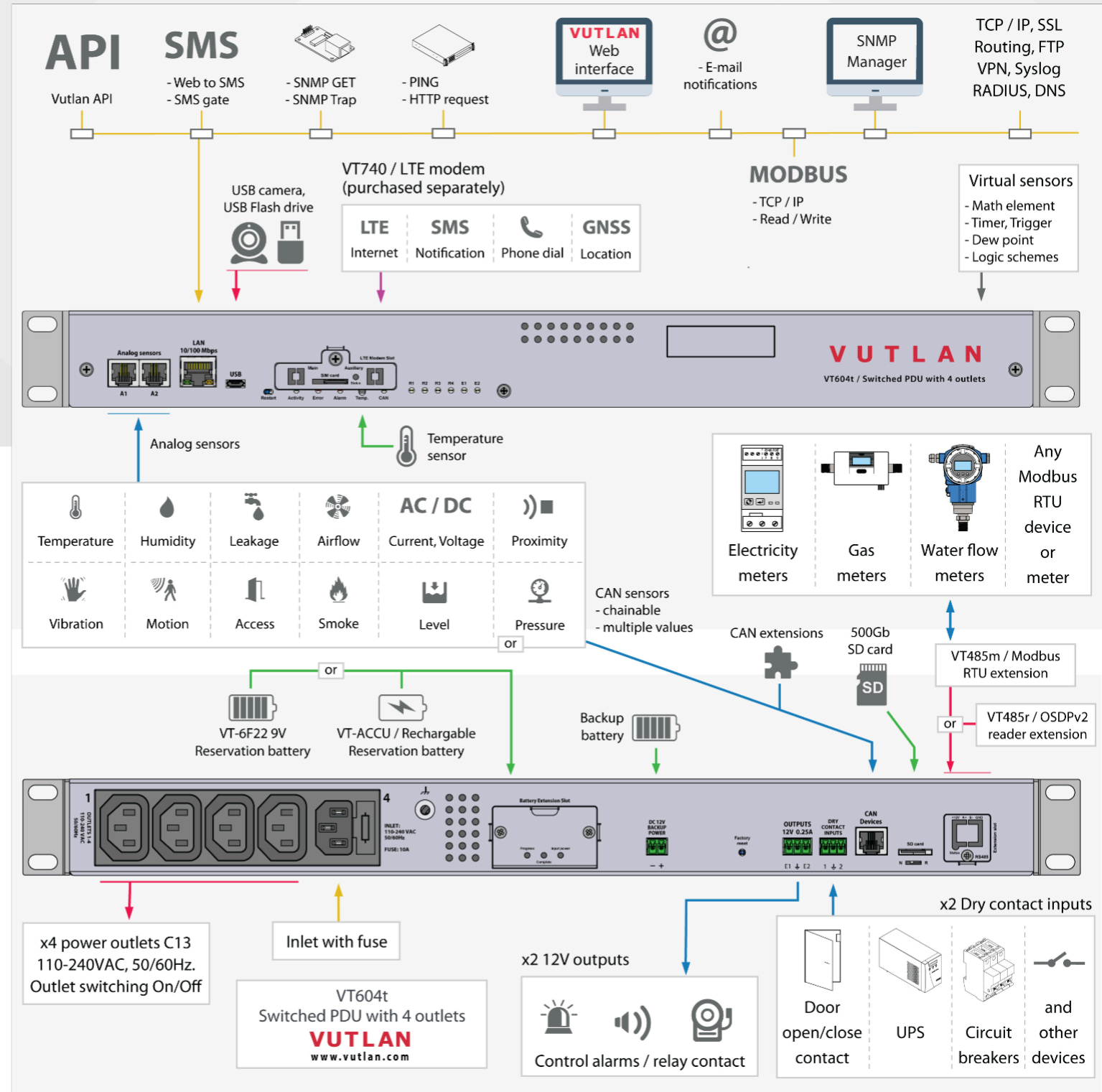
Specifications

CPU Speed / RAM / OS	2 cores, 720mHz / 128Mb / Linux v.6.2
Ethernet	10/100Mbps
Outlets	x4 C13 outlets, 110-240V AC, 50/60 Hz.
Inlet	C14 inlet, 110-240V AC, 50/60Hz, Fuse 10A
Reserve power	12V DC terminal
USB micro	For USB camera, USB flash, USB hub
Analog ports	x2 ports for sensors (extendable using CAN)
CAN port	Connect up to x32 sensors & devices
Dry Contact inputs	x2 dry contact inputs
LAN	Ethernet 10/100 Base-T port
Relays (12V DC)	x2 outputs, 0.25A each
SD card slot	Up to 512 Gb SDHC
LTE slot modem	Ethernet, SMS (VT740 ordered separately)
Mounting	19" 1U (brackets included)
Extension slot	VT485m / Modbus RTU extension slot or VT485r / OSDPv2 reader extension slot
Battery extension slot	VT-ACCU / Rechargeable reservation battery or VT-BAT / Reservation battery 6F22 9V
Warranty	3 years
Support	On-line portal

Supports

- Centralized Monitoring & Control**
 - Responsive Web Interface
 - SNMP v1, v2c, v3
- Scalability**
 - Extension units, LTE modem, OSDPv2, Modbus RTU
 - Modbus TCP/IP, 4-20mA, 0-10V, Analog, CAN
- Improved security**
 - OpenVPN, SSL, HTTPS
 - Three-tier data access permissions with login
- Protocol support**
 - DHCP, HTTP, HTTPS, DynDNS, SMTP, RADIUS, Syslog, NTP server, HTTP request
- API**
 - Application Programming Interface
 - XML, JSON
- System Usability**
 - Multi-language mobile interface
 - First-time wizard
 - Sensor graphing for single and multiple sensors
- Virtual sensors / devices / elements**
 - PING, Timers, Triggers, Logic schemes, SNMP GET
 - IP cameras, Groups, Math
- Notifications and alerts**
 - E-mail, SMS, Phone dial, SNMP Traps, Web-to-SMS, SMS link
- Logging**
 - SD card, USB flash, E-mail, FTP

Example connections



Monitor & Control:

Outlets	Motion	SNMP Trap, Get	Smoke	Modbus TCP/IP, RTU	Relays	Temperature	Leakage	Vibration	Contacts
Access	Airflow	Proximity	Pressure	Level	PING	AC / DC Power	4-20mA	Alarms	Humidity

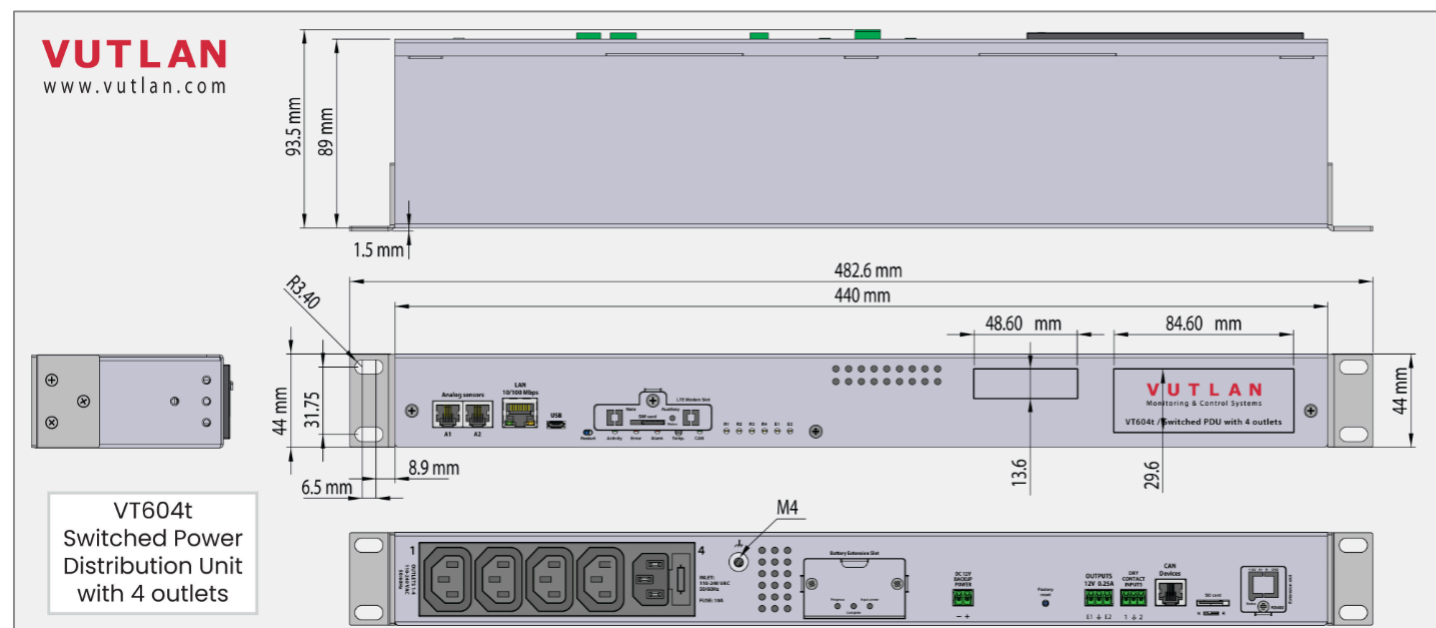
Embedded Web Interface



Outlets

Outlet-1	Outlet-2	Outlet-3	Outlet-4
01	02	03	04
<input type="radio"/> On	<input type="radio"/> On	<input type="radio"/> On	<input type="radio"/> On
<input type="radio"/> Off	<input type="radio"/> Off	<input type="radio"/> Off	<input type="radio"/> Off

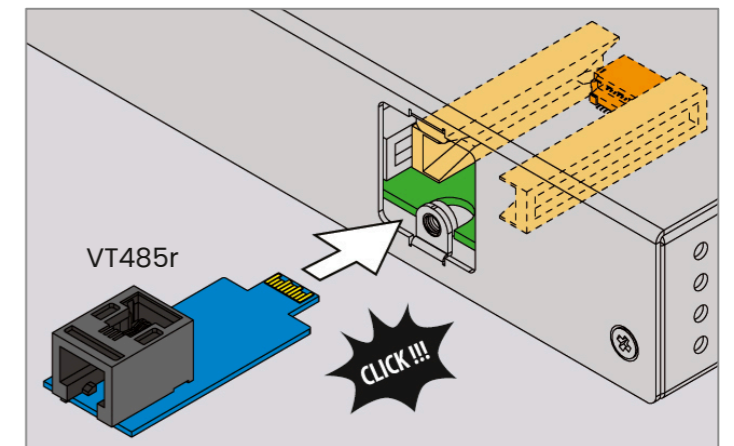
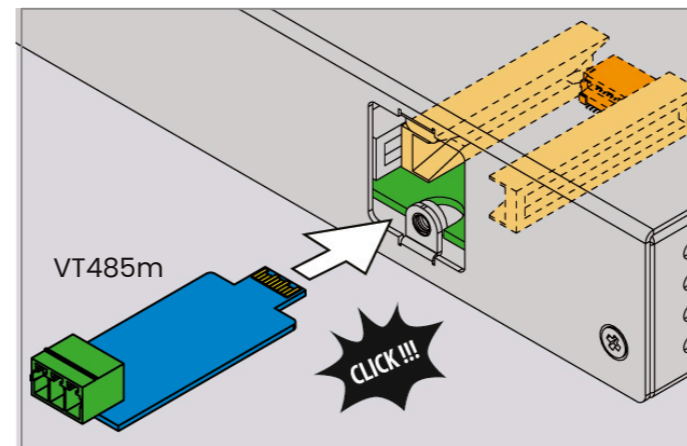
Dimensions



VT485m / Modbus RTU extension or VT485r / OSDPV2 reader extension

Ordered separately

Ordered separately



VT740 / LTE slot modem

Ordered separately

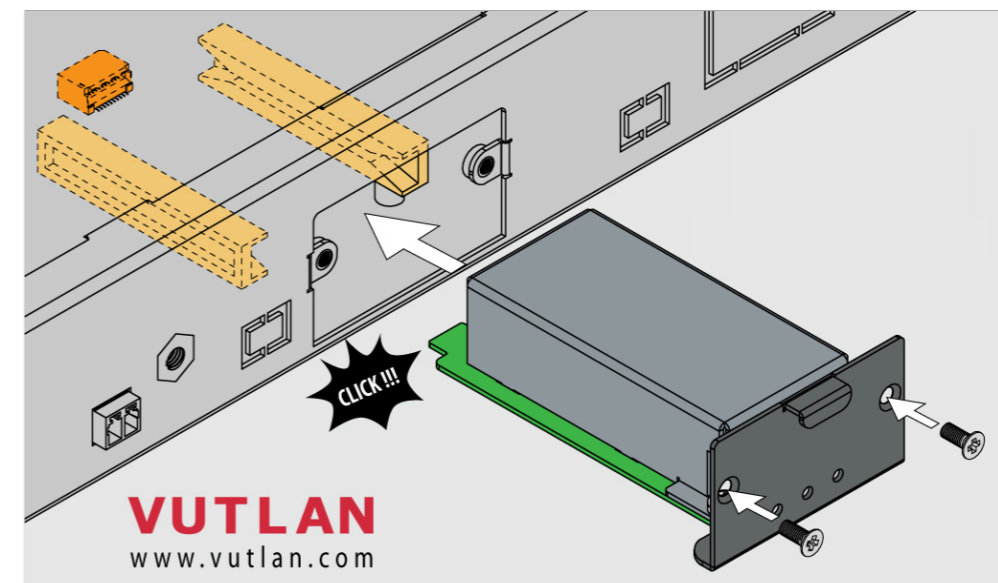
VT740 / LTE slot modem

- Allows to receive and send SMS messages (2G, 3G).
- Provides Ethernet over LTE (4G).
- Power cycling is an embedded function.

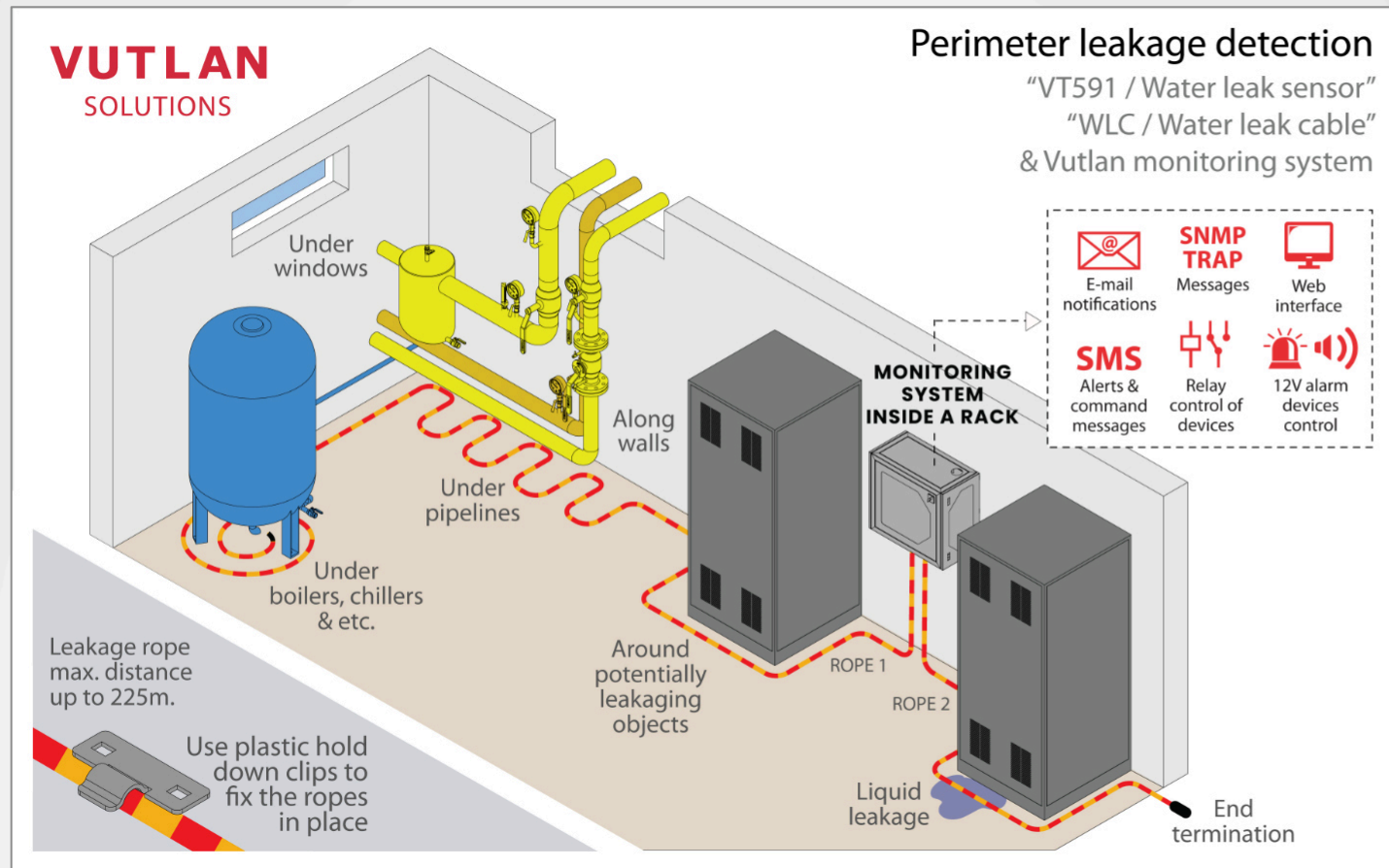
VT-BAT / Backup battery 6F22 9V or VT-ACCU / Backup reservation battery

Ordered separately

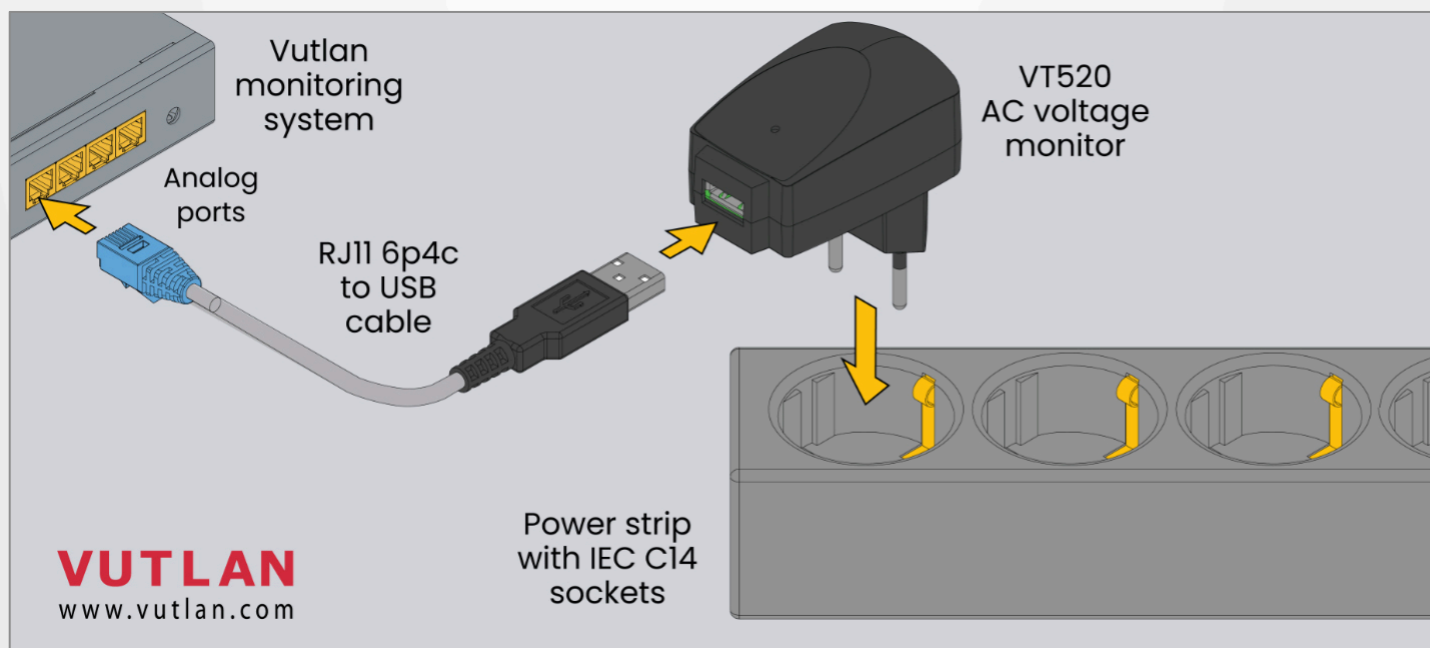
Ordered separately



Leakage detection

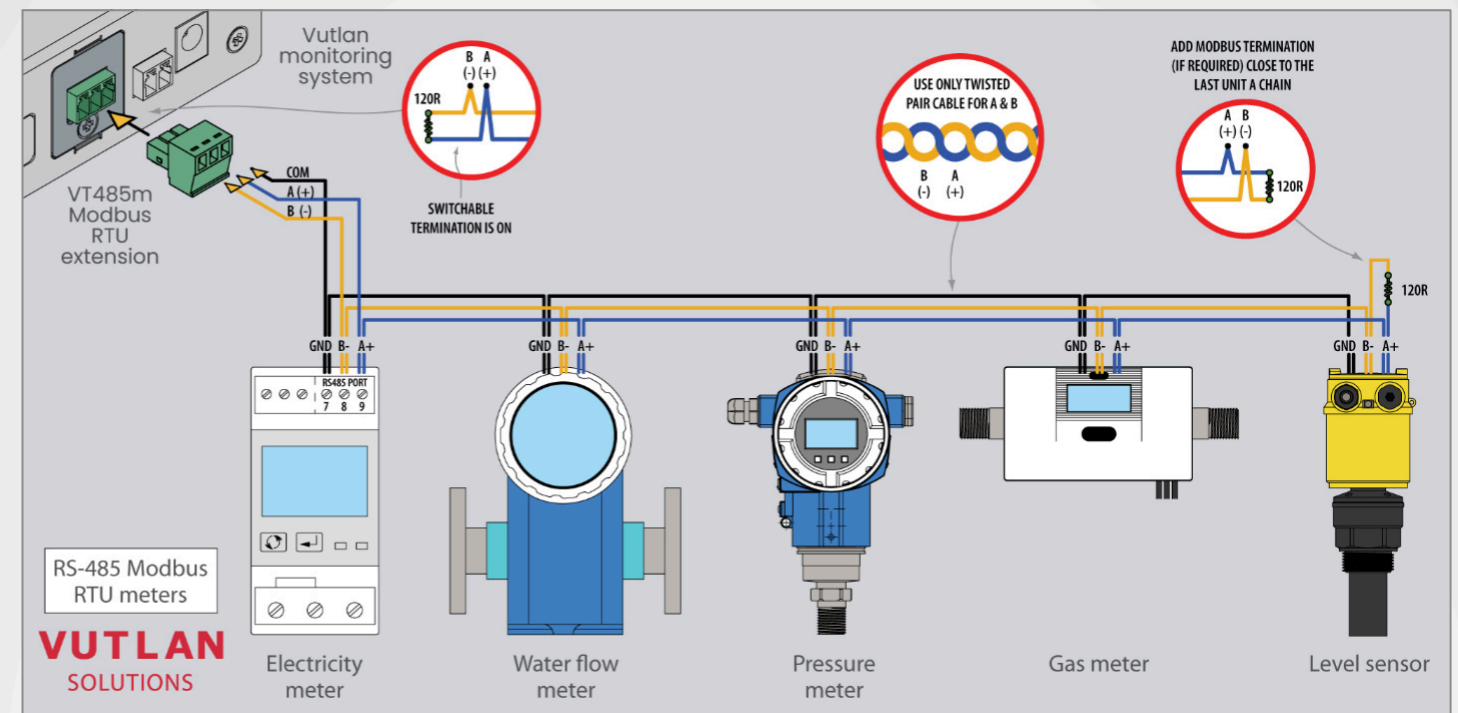


Measure AC voltage 0-246V

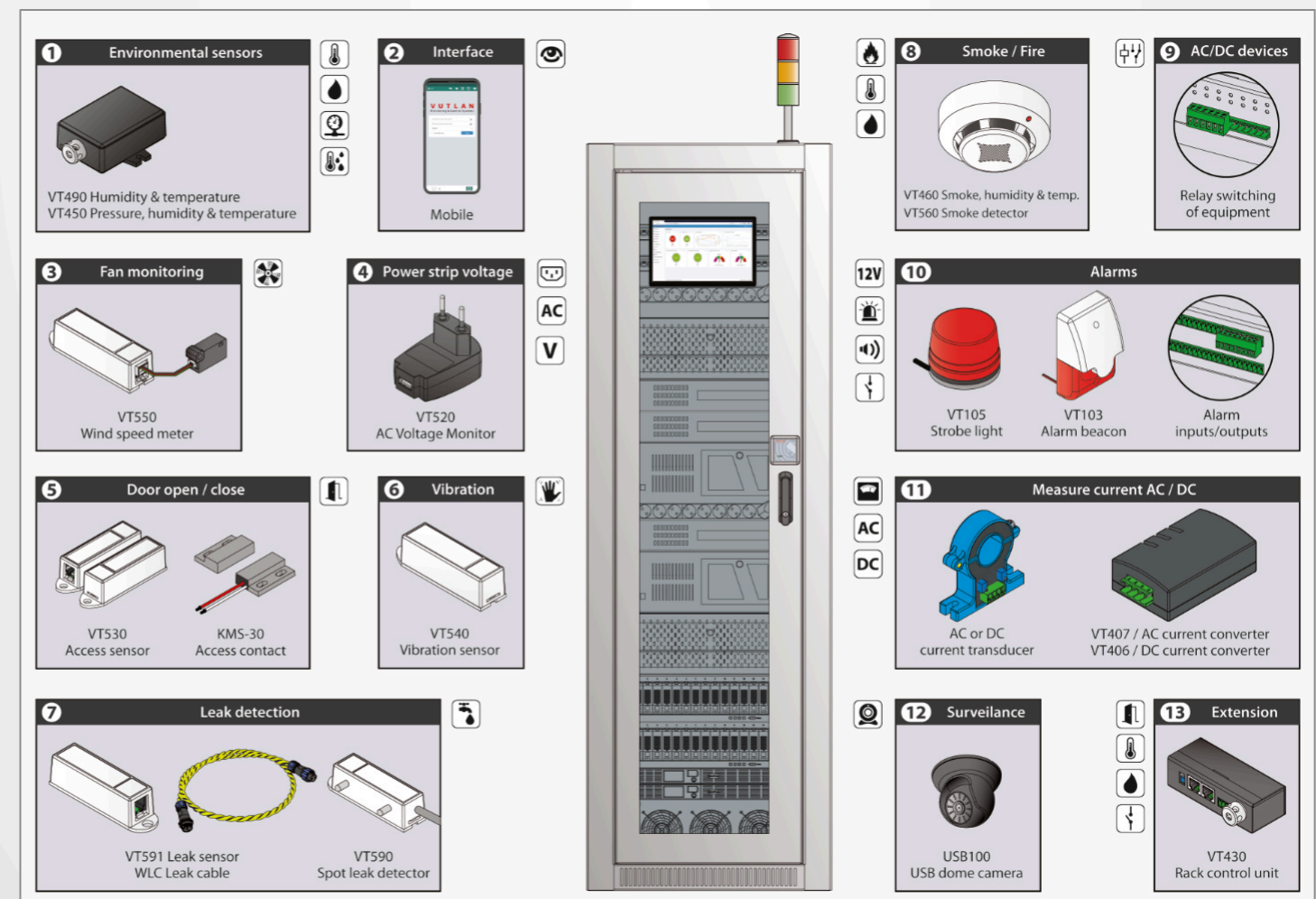


VT485m / Modbus RTU extension

Ordered separately



Server Rack & Data Center monitoring



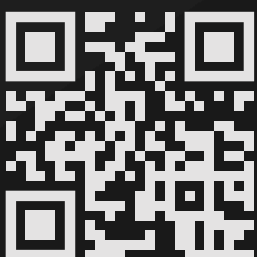


Vutlan Partner Network

Vutlan is working with Distributors,
Solution Providers and Integrators
all around the world.

65+
PARTNERS

+37
COUNTRIES



Vutlan s.r.o. (LTD)
43 ul.Svornosti,
82106, Bratislava,
Slovak Republic, EU
sales@vutlan.com
www.vutlan.com

VUTLAN